

Annual Report *of Stewardship* 2024-25



Corpus Christi
CATHOLIC PARISH
PILGRIMS *of* Hope

MESSAGE FROM

FR. JERRY VOLZ

Dear Corpus Christi Family,

As we come to the close of the year of Jubilee, my heart is filled with gratitude for each of you. This Jubilee Year, together with the 25th anniversary of our Church building of Corpus Christi, reminds us of how richly God has blessed our parish family. For twenty-five years this sacred place has been a home where faith has been nourished through the Sacraments, where joys and sorrows have been shared, and where Christ has been encountered. None of this would be possible without your faithful prayers, your generous stewardship, and the spirit of hospitality and service that so beautifully characterizes our community.

This report is more than numbers or statistics—it is a testimony of faith. It reflects the love, sacrifice, and commitment that allow Corpus Christi to thrive and serve. I pray that our parish will continue to build on this strong foundation, walking together in faith, hope, and charity. May God, who has begun such good work in us, bring it to fulfillment in the years to come. Truly, *“The Lord has done great things for us, and we are filled with joy”* (Psalm 126:3).

With gratitude and prayers,



Fr. Jerry Volz

MISSION

As a growing community of disciples we are to bear witness to the love and compassion of Jesus Christ by our work, worship and hospitality. As a community of faith we are first and foremost nurtured by the Eucharist, so as to become the Body of Christ - Corpus Christi.



SERVING WITH HOPE

Corpus Christi celebrated its 25th Jubilee for both the parish campus and the school with great joy and gratitude. Since our founding in 1981 with just 300 families, the growth of our parish has been incredible, we have now grown to 1,413 families.

As with any parish that experiences such growth, our needs for data tracking, communication, and church operations have also evolved. Over the past year, we successfully rolled out our new Parish Information System, Corpus Connect. It has become an essential tool for parish staff and ministry leaders, making it easier to maintain accurate records, communicate directly, and provide real-time access to information in a user-friendly way.

We have seen a great increase in both participation in parish events and volunteer involvement. Many long-term and new parishioners alike are actively engaging in ministries and attending parish-hosted events. Corpus Connect continues to strengthen our ability to connect as a parish family, support ministries, and serve our community more effectively.

We are grateful for the continued dedication of our parishioners, both longtime and new, and we look forward to building on this momentum in the years ahead. Together, we celebrate our shared faith, strengthen our community, and continue to grow as a vibrant parish family.



PARISH WIDE SOCIAL EVENTS

- 25th Jubilee Feast Day 3-Day Celebration
- 3rd Annual Knights of Columbus Chili Contest
- 4th Year Ministries hosted Lenten Dinners on Fridays
- 4th Annual Ministry Fair
- 5th Annual Parish Workday
- 8th Year Hosting LINK *"Community Thanksgiving Day"* meal assembly and delivery
- 8th Year Hosting LINK *"Christmas Turkey Drop-off"*
- A Night at the Ballpark Family Movie Night
- BINGO Night
- Corpus Christi Adult Choir Combined with St. Lawrence Center Choirs to perform *"Requiem for the Living"* by Dan Forest
- Catholic Moms hosted Easter goody bags for children
- Donum Gratiae Event
- Empty Nesters Hosted *"Grandparents Matter – Legacy of Faith Program"*
- Fully Alive Ministry Hosted *"Faith Based Mental Health Program"*
- Leadership Gathered for the 15th Year of Christmas Calling
- *"Lunch & Learn"* with Sister Doris
- Music Ministry Hosted Bales Choral Society Concert of *"Handel's Messiah"*
- *"The Book of Revelations"* with Fr. Mike
- *"The Prophets"* with Fr. Mike
- *"The Search"* with Fr. Jerry
- Stewardship Appreciation Dinner
- Trivia Night
- Trunk or Treat
- Young Adults delivered Poinsettias to the Homebound for Advent
- Young Adults delivered Easter Flowers to the Homebound for Lent

PARISH COMMUNITY



6.2 AVERAGE NUMBER OF MINISTRIES INVOLVEMENT PER HOUSEHOLD

- **1413** REGISTERED HOUSEHOLDS
- **39** NEW FAMILIES
- **68.5%** PARTICIPATED IN STEWARDSHIP RENEWAL
- **4** NEW MINISTRIES



SPACE UTILIZATION PROJECT

Over the past year, the parish partnered with Treanor and a dedicated Steering Committee to conduct a comprehensive Space Utilization Study to assess current facilities and plan for future needs.

Feedback from parish leaders, school staff, and ministry groups highlighted key priorities, including improved office and classroom space, additional meeting and storage areas, and necessary maintenance updates.

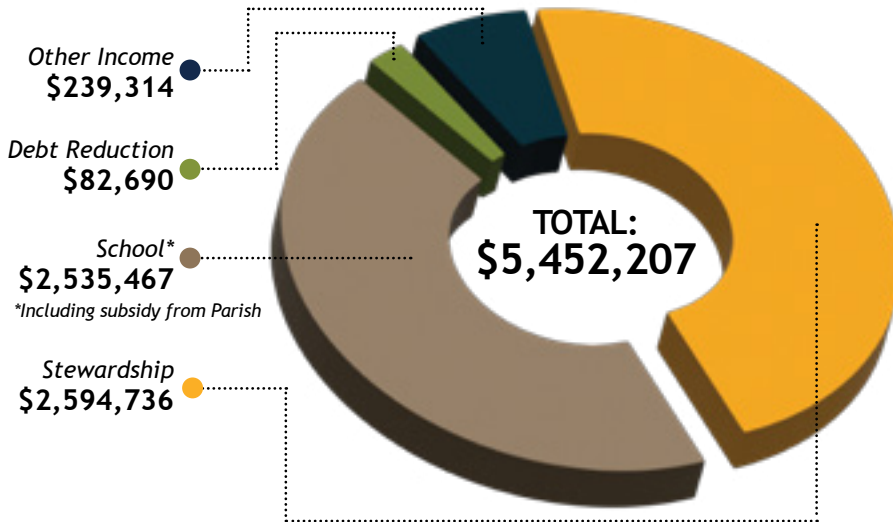
As the parish moves forward, guided by stewardship and faith, community engagement and prayerful discernment will remain central to shaping the next chapter of Corpus Christi's future.



2024-2025 FINANCIAL RESULTS

Below are the highlights of our financial results for the year ended June 30, 2025. Financial stewardship increased 1.7% from last year. A notable improvement made to our campus this year was the installation of new LED, energy-efficient parking lot light poles. Roof repairs continued to need addressed and incurred expenses of \$68,000 during the year. Large repair and improvement expenses were budgeted for, so in addition to covering these costs we also reserved \$110,000 for future roof replacement and/or parking lot paving. All other excess funds will be directed to the future building fund.

PARISH-WIDE REVENUE



Stewardship: Envelope, plate, special parish collections & other parochial collections.

Debt Reduction: Capital Campaign pledges, debt reduction, Archdiocesan Capital Campaign rebate.

Other Income: Religious Education fees, mass intentions, candle donations, bequests, wedding income.

School: Total \$2,535,467 including \$930,000 from the parish for the school subsidy.

Note: This report excludes unrealized gains/losses on the School Endowment fund.

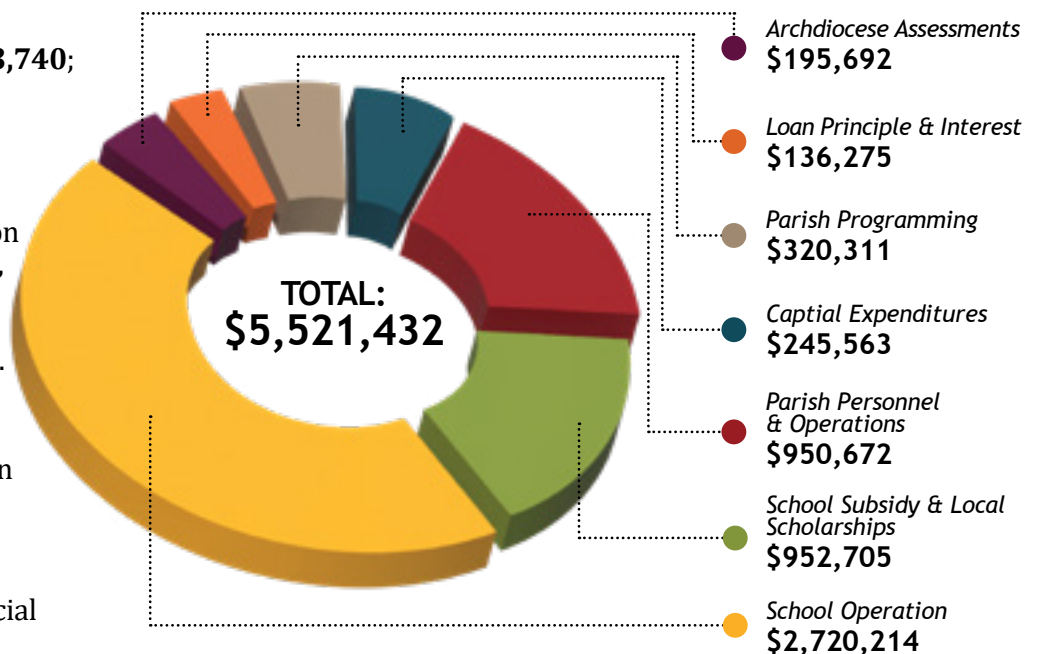
PARISH-WIDE EXPENDITURES

Parish Debt

- During 2024-2025 we paid \$118,670 toward our debt principal.
- Total debt at 6/30/2025: \$273,740; due 7/1/2028.

Capital Expenses

- Capital expenses during the year included \$11,000 spent on updating HVAC control system, \$68,000 for roof repairs, and \$67,000 for new LED, energy-efficient parking lot light poles.
- This year we engaged Treanor Architects to do a Space Utilization Study in preparation for future building and space modifications.
- We have been putting aside \$10,000 per month into a special savings account reserved for current and upcoming capital expenditures.

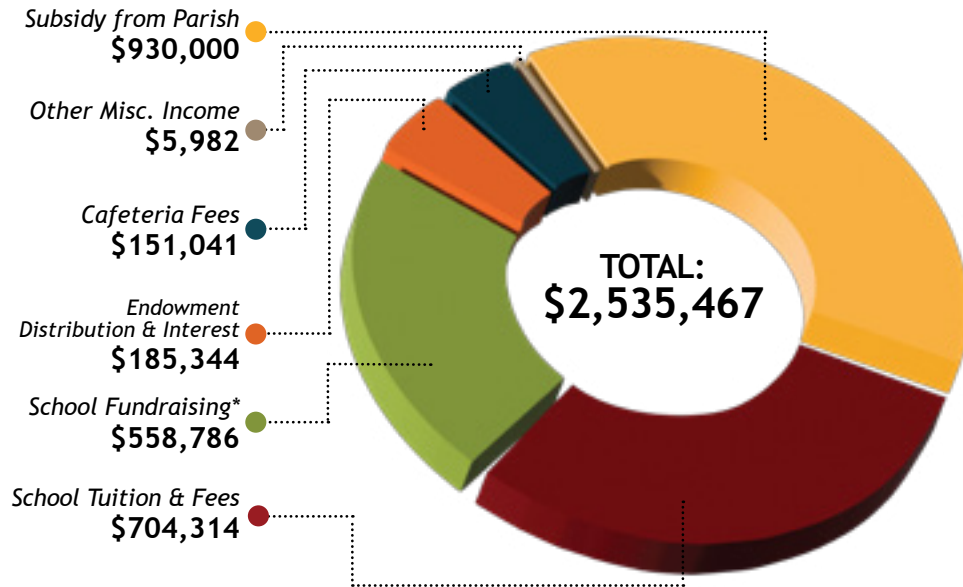




SCHOOL PERFORMANCE

SCHOOL REVENUE

Excluding the parish subsidy, the school's main source of income is from tuition and fees. Of the **\$2.5M** school revenue, the subsidy from the parish totaled **\$930,000** for FY24-25, and tuition and fees account for **\$704,314**. The timing of when school fees were collected changed during this fiscal year. In the past, all school fees were due by May 1st prior to the start of the following school year. This year, with the transition to FACTS as our SIS system, it was the first full year that student fees were not pre-collected (no bulk collection of fees in May as in prior years), but instead, are being collected over the course of the school year. The timing of the collection of fees skews the income reporting during this first year but better aligns income recognition going forward.

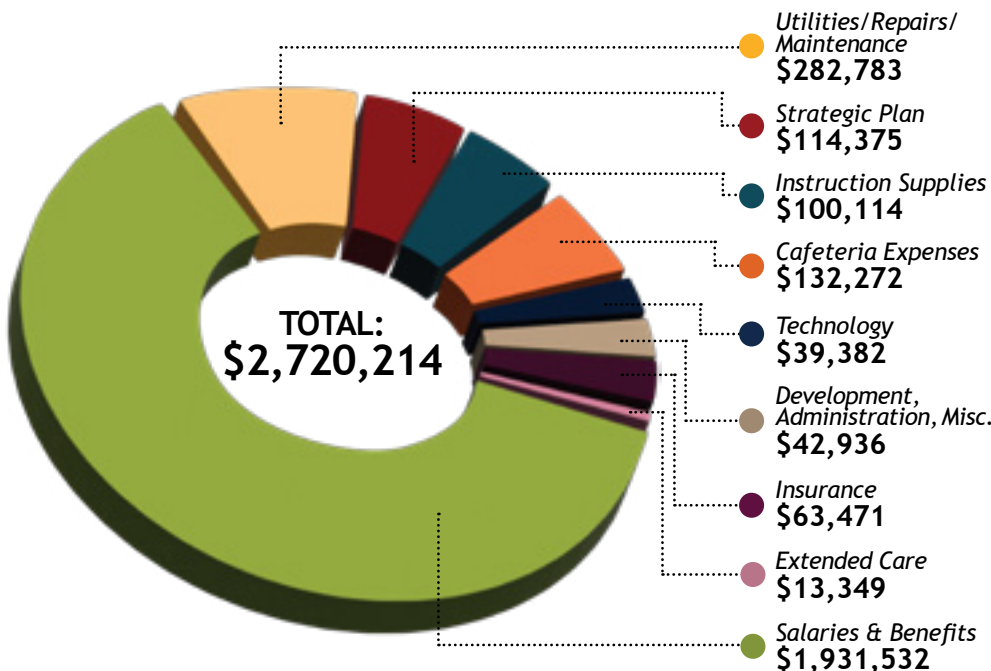


School Fundraising*	
Donum Fidei Auction	\$209,441
Fund the Future	\$114,375
Big Bazooohley	\$122,918
League of Angels & Other Gifts	\$112,052



SCHOOL EXPENSES

School expenses totaled **\$2.7M** for FY24-25. The majority of which consists of salaries and benefits, utilities, repairs, maintenance, instruction supplies and cafeteria expenses. Included in this year's instruction supplies expense is new 6-year ELA curriculum for grades 6th-8th, which cost **\$18,365**.



At the end of the last school year, we had **300 students** in grades K-8 and **19 preschoolers**.

Enrollment continues to be strong, and we remain thankful for the generosity of the parish in supporting the next generation of Catholics.

INCOME

CHURCH RECEIPTS	Actual	Budget
Stewardship	2,594,736	2,616,110
Other Income	239,314	101,311
Debt Reduction	82,690	50,000
SUBTOTAL CHURCH INCOME	2,916,740	2,767,421
SCHOOL RECEIPTS	Actual	Budget
School tuition & fees	704,314	793,300
Fundraisers	558,786	569,375
Endowment & interest	185,344	179,000
Parish subsidy	930,000	930,000
Cafeteria	151,041	149,293
Other misc. income	5,982	---
SUBTOTAL SCHOOL RECEIPTS	2,535,467	2,620,968
TOTAL PARISH INCOME	5,452,207	5,388,389

EXPENSE

PARISH DISBURSEMENTS	Actual	Budget
Parish programming	320,311	313,620
Capital expenditures	245,563	141,000
Loan Principal & Interest	136,275	167,943
Parish Personnel & Ops	950,672	978,593
School Subsidy & Local Scholarships	952,705	953,600
Archdiocese Assessments	195,692	212,665
SUBTOTAL CHURCH DISBURSEMENTS	2,801,218	2,767,421
SCHOOL DISBURSEMENTS	Actual	Budget
Salaries & benefits	1,931,532	1,908,453
Utilities/repairs/maintenance	282,783	255,672
Cafeteria expenses	132,272	130,691
Strategic plan	114,375	114,375
Instruction supplies	100,114	86,400
Technology	39,382	25,000
Insurance	63,471	61,657
Development/admin/misc.	42,936	38,720
Extended care	13,349	---
SUBTOTAL SCHOOL DISBURSEMENTS	2,720,214	2,620,968
TOTAL PARISH DISBURSEMENTS	5,521,432	5,388,389
NET OPERATING DEFICIT	(69,225)	

RESPONSIBILITY TO THE ARCHDIOCESE

Cathedraticum: Annual tax as provided under Canon Law Section 1263 for the bishop to fund the administrative costs of the diocese: **\$113,007**

Assessments and Collections: Includes amounts assessed to parishes or regions for Savior Pastoral Center and Youth Formation, as well as the Catholic Charities Christmas Collection and Priesthood Present and Future Collection:

- Youth Formation Assessment: **\$27,122**
- Christmas Collection (*additional amount above what was collected from parishioner donations*): **\$12,198**
- Pastoral Center Assessment: **\$10,843**
- Priesthood Assessment: **\$44,720**
- The Leaven: **\$28,250**

RESPONSIBILITY TO OUR COMMUNITY

We provided direct support to Douglas County residents with rent and utility assistance, gas and grocery gift cards totaling **\$22,013** for the year.

Holy Day Special Collections:

- **Collections for Insight Pregnancy Center:** (*Assumption & Immaculate Conception Holy Day collections*) **\$3,322**
- **Collections for DARE:** (*Solemnity of Mary Holy Day collection*) **\$1,697**
- **Collection for Catholic Charities of Lawrence:** (*All Saints Day Holy Day Collection*) **\$2,757**

RESPONSIBILITY OUTSIDE OF THE ARCHDIOCESE

Holy Father - Peter's Pence	\$861
Central & Eastern Europe	\$2,162
California Wildfires	\$5,520
Holy Land (<i>Good Friday</i>)	\$2,746
Campaign for Human Development	\$1,179
Catholic Charities Christmas	\$21,490
Hurricane Relief	\$7,093
CRS Rice Bowls	\$1,025
World Mission Sunday	\$ 285
Retirement for Religious	\$1,932
Mission Co-op	\$4,367
The Catholic Relief Services	\$ 538

* This report excludes unrealized gains/losses on the School Endowment fund.

ACADEMIC SUCCESS & NEW OPPORTUNITIES

It's been a wonderful start to the 2025–26 year at Corpus Christi Catholic School! We've expanded our Education in Virtue program with the Dominican Sisters of Mary, focusing on virtues like responsibility and docility as we help students grow in faith and character.

Academically, our students excelled on the 2025 Kansas State Assessments by outperforming state and archdiocesan averages in nearly every grade and subject, including standout scores in 8th grade science (+37) and 3rd grade ELA (+39).

New this year, students can join Girls' Bible Study, Technology and Programming, Saintly Leaders, Yearbook, Photography, and our victorious new eSports team, along with favorites like Marathon Club, fine arts, and CYO sports.

Thank you for supporting a faith-filled, well-rounded education for our Saints!



FAITH FORMATION

CELEBRATING 2024-25

- 41 students received their First Reconciliation and First Holy Communion.
- 45 students received the Sacrament of Confirmation on October 23, 2025 from Archbishop McKnight.
- We brought back Vacation Bible School in June. Over 80 children learned all about Mary and her messages on The Queen of Heaven Express. We're looking forward to summer 2026 already when we Sail With the Holy Spirit!
- We took 29 high schoolers to the annual Steubenville Youth Conference in Springfield, MO on July 18-20, joining over 5,000 other Catholic teens to celebrate and ignite our faith.

FALL 2025

- 55 - 7th and 8th graders enrolled in Confirmation Prep.
- 78 students enrolled in Religious Education.
- Quarterly Parent Formation nights provide parents the space to learn how to live as authentic Catholic parents from guest speakers and small group conversations.
- Quarterly Domestic Church meetings for young families to celebrate the Catholic faith together and bring new prayer rituals centered in Catholic teaching home with them to live out as a family.

NEW THIS FALL!

- ***Walking With Purpose Women's Bible Study.*** We have 67 women enrolled! WWP Bible studies help women grow closer to Christ as they lean on truths found in Scripture to live joy-filled lives.
- ***Children's Liturgy of The Word*** at the 10:00 a.m. Mass: Children's Liturgy of the Word is when children (ages 4–8,) leave the main assembly during the Liturgy of the Word at Mass to hear the Scripture readings, a reflection (homily), and sometimes engage in discussion or a simple activity, which are all geared to their level of understanding.



6001 Bob Billings Pkwy • Lawrence, KS 66049

SACRAMENTS IN 2024-25



45
BAPTISMS



11
MARRIAGES



21
ADULTS MADE THEIR
PROFESSION OF

FAITH

68



CELEBRATED THEIR
FIRST **COMMUNION**



14
FUNERALS



27 ADULTS CELEBRATED
THE SACRAMENT
OF **CONFIRMATION**