

# Annual Report *of Stewardship* 2023-24



we are

# CORPUS CHRISTI



Corpus Christi  
CATHOLIC PARISH

# MESSAGE FROM FR. JERRY VOLZ

Dear Corpus Christi Family,

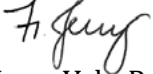
It is my pleasure to present this Annual Stewardship Report for 2023-2024. As you read this report, I hope you will recognize the many ways we encountered Christ's presence and showed love to one another and our greater community and world. Although our annual theme has shifted in following with the U.S. Catholic Church to year three of our Eucharistic Revival, we are not leaving behind the many ways we have encountered Christ, but rather now being sent on mission to bring Christ to others.

Encounter must continue to be, in the words of Pope Francis, our greatest desire for ourselves and our greatest gift to others. This sincere gift of self was shown in the ways we shared our precious time, talent and treasure through our stewardship of prayer, service and the financial sacrifices made throughout the year: volunteers made weekly visits to homes taking the Eucharist with them, settled refugees in new homes, fed the hungry and helped bring greater awareness about mental health concerns. Our new youth ministry formed community and grew in their love of Jesus through one another and participated in the Prayer and Action Service Week and attended several Catholic Youth experiences. We donated thousands of pounds of food to Just Food, diapers to the Selah House, helped provide a sonogram machine to help women to know more about the life in their womb, and helped young mothers with supplies at the Ballard Center.

As a parish we also had fun events such as our Feast of Corpus Christi, Chili Feed and Competition, Trivia Night, and donuts. We enjoyed Welcome Weekends, soup suppers, monthly breakfasts, and choir concerts. We encountered Christ at Mass, during our Advent and Lent Holy Hours and speaker series, parish book program, and at Adoration and First Fridays.

Please join me in a prayer of gratitude for the many opportunities God has given us to encounter Him and each other during the past year. And let us also pray that we may continue the good work He has begun in us.

Yours in Christ,



Fr. Jerry Volz, Pastor

## MISSION

*As a growing community of disciples we are to bear witness to the love and compassion of Jesus Christ by our work, worship and hospitality. As a community of faith we are first and foremost nurtured by the Eucharist, so as to become the Body of Christ - Corpus Christi.*

## we ADVANCE

As we look ahead to the coming year, several key maintenance projects are essential to preserve the church's infrastructure and ensure it remains a safe, welcoming space for everyone.

Our immediate priorities include roof repairs to address minor leaks and prevent further damage. Additionally, the exterior of the building also requires attention, with plans to replace or repair areas showing wear. We will also assess the condition of our lighting systems, both inside and outside the church, to ensure energy efficiency and security.

Finally, we will begin to assess the current use of space in the church and the school. A possible outcome is to complete the final phase of the original master plan by adding parish offices. This would free up space in the school (where current parish staff are located) and add additional meeting spaces for staff and ministries.



# we CELEBRATE

St. John Paul II said, "Prayer joined to sacrifice constitutes the most powerful force in human history." Prayer is the foundation of all forms of stewardship we practice at Corpus Christi. The most important way God is active in our parish is in the Eucharist. Corpus Christi – the Body of Christ – is how **HE** in the presence of the Eucharist, nourishes **WE** – His living body. While it is impossible to count the number of hours we prayed both as a parish and as individual children of God during the past year, we know that prayer is the most important thing we offer to the Lord every day. Our prayer takes many forms: Sunday and daily Masses, the Sacraments, weddings and funerals, the Stations of the Cross, communal Rosary services, Exposition and Adoration, Bible studies, private reflection and more.

## PARISH WIDE SOCIAL EVENTS

- Hosted Men's Journey Retreat
- Advent Speaker Series
- Feast of Corpus Christi
- Eucharistic Procession
- Sundaes & Street Eats
- BINGO night
- 3rd Annual Ministry Fair
- 2nd Annual K of C Chili Contest
- Stewardship Appreciation Dinner
- Easter Bags for children at Easter
- Trivia Night



## PLAZA & MARY STATUE

An example of how we may all take ordinary needs and challenges and turn them into prayer is shown in our renovated plaza outside. Since its original construction more than 20 years ago, the plaza once used as the main entrance for our school and offices had deteriorated and needed to be replaced.

Now the area serves as both an entry into our campus buildings, but also serves as a place of prayer. We celebrate with the Blessed Mother and Child the gift of life and the call to care for others. Our Blessed Mother invites us to go to her son, and He in turn invites us to take Him to others. The grace received in the Sacraments strengthens us to do so.

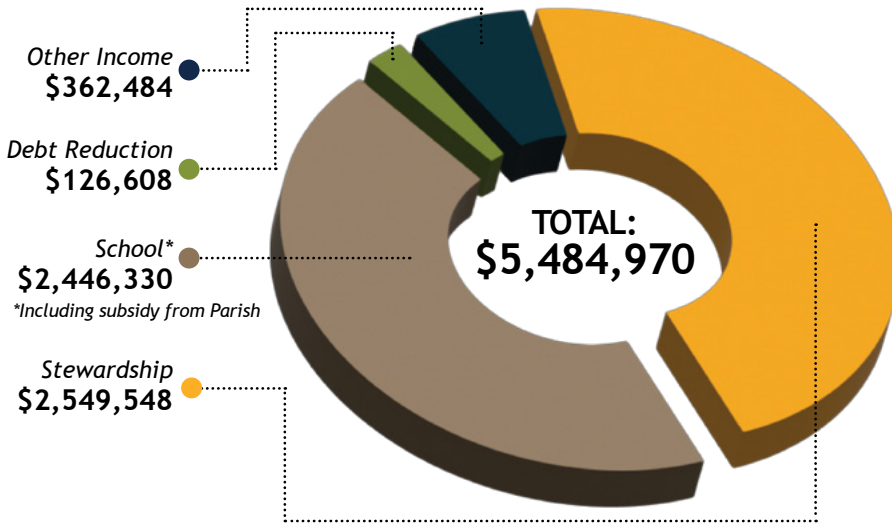
## SACRAMENTS



### 2023-2024 FINANCIAL RESULTS

Below are the highlights of Corpus Christi Catholic Community financial results for the year ended June 30, 2024. Financial stewardship increased 8.7% from last year, and was 6% above our budgeted amount for the year. This surplus position allowed for an additional **\$21,000** reduction of debt than originally budgeted. The remaining surplus was directed toward capital improvements including final expenses on the installation of the parish chiller, roof repairs and and bell tower control unit and other strategic needs of the parish, including reserving **\$110,000** for future roof replacement and/or parking lot paving. All other excess funds will be directed to the future.

### PARISH-WIDE REVENUE



**Stewardship:** Envelope, plate, special parish collections & other parochial collections.

**Debt Reduction:** Capital Campaign pledges, debt reduction, Archdiocesan Capital Campaign rebate.

**Other Income:** Religious Education fees, mass intentions, candle donations, bequests, wedding income.

**School:** Total **\$2,446,330** including **\$930,000** from the parish for the school subsidy.

*Note: This report excludes unrealized gains/losses on the School Endowment fund.*

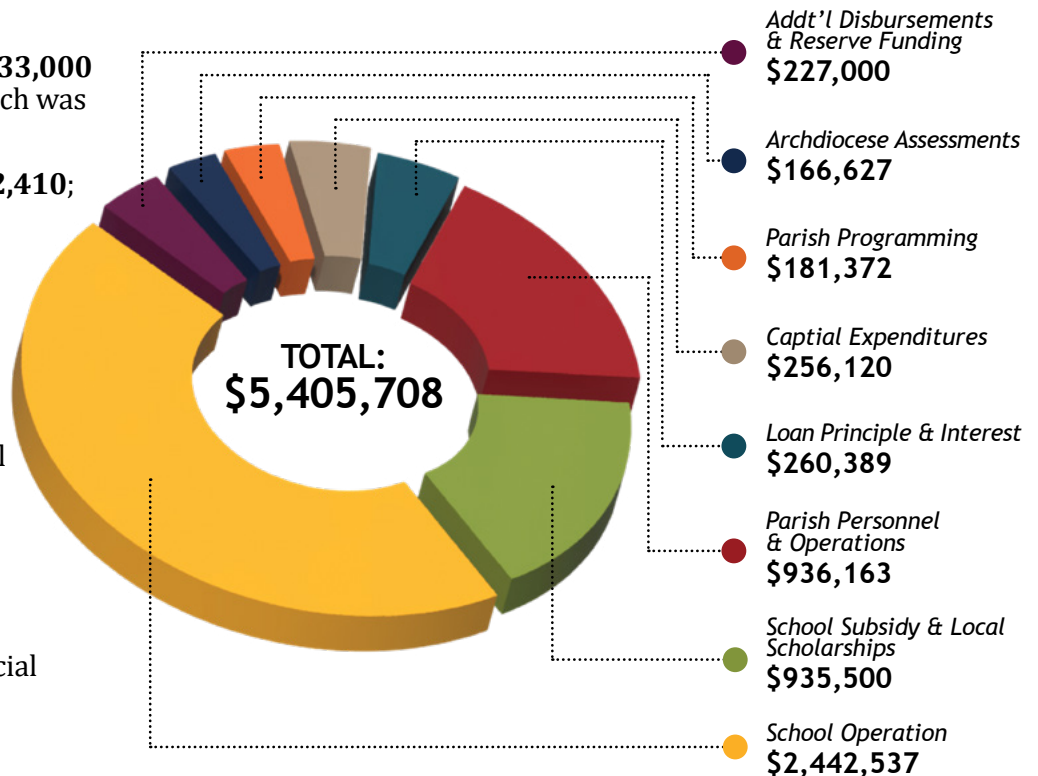
### PARISH-WIDE EXPENDITURES

#### Parish Debt

- During 2023-2024 we paid **\$233,000** toward our debt principal, which was **\$21,000** over our budget.
- Total debt at 6/30/2024: **\$392,410**; due 7/1/2028.

#### Capital Expenses

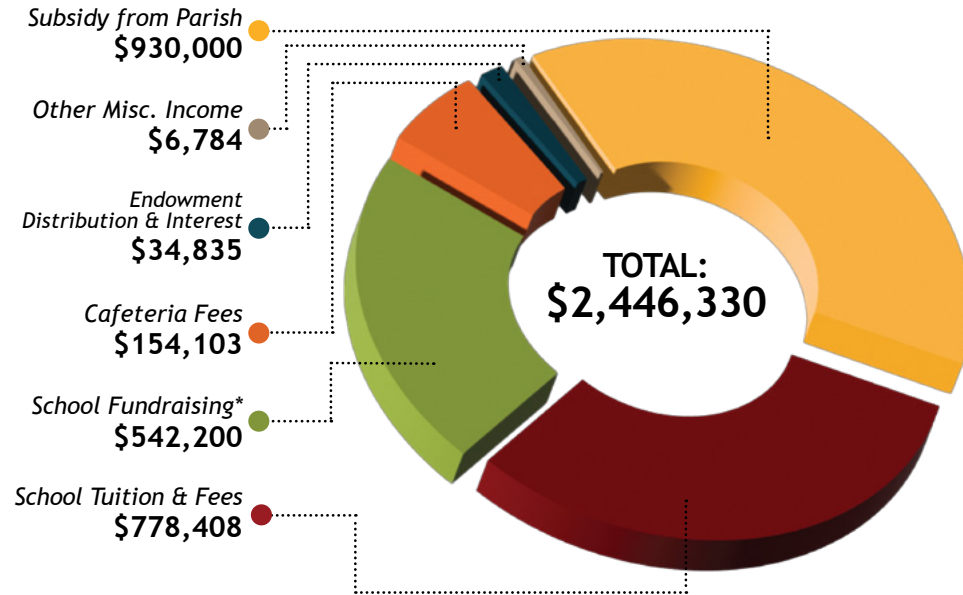
- Capital expenses during the year included **\$18,000** spent on insulation/anti-freeze application in the church ceiling, **\$10,000** for final glycol installation for the new chiller, **\$15,000** for church roof repair and **\$4,800** for new automated bell control.
- We have been putting aside **\$10,000** per month into a special savings account reserved for current and upcoming capital expenditures.



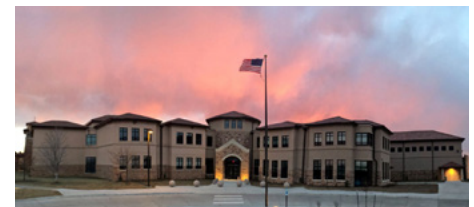
### SCHOOL PERFORMANCE

#### SCHOOL REVENUE

Excluding the parish subsidy, the school's main source of income is from tuition and fees. Of the **\$2.4M** school revenue, the subsidy from the parish totaled **\$930,000** for FY23-24, and tuition and fees account for **\$778,400**. Additionally, the school does a tremendous job fundraising every year.

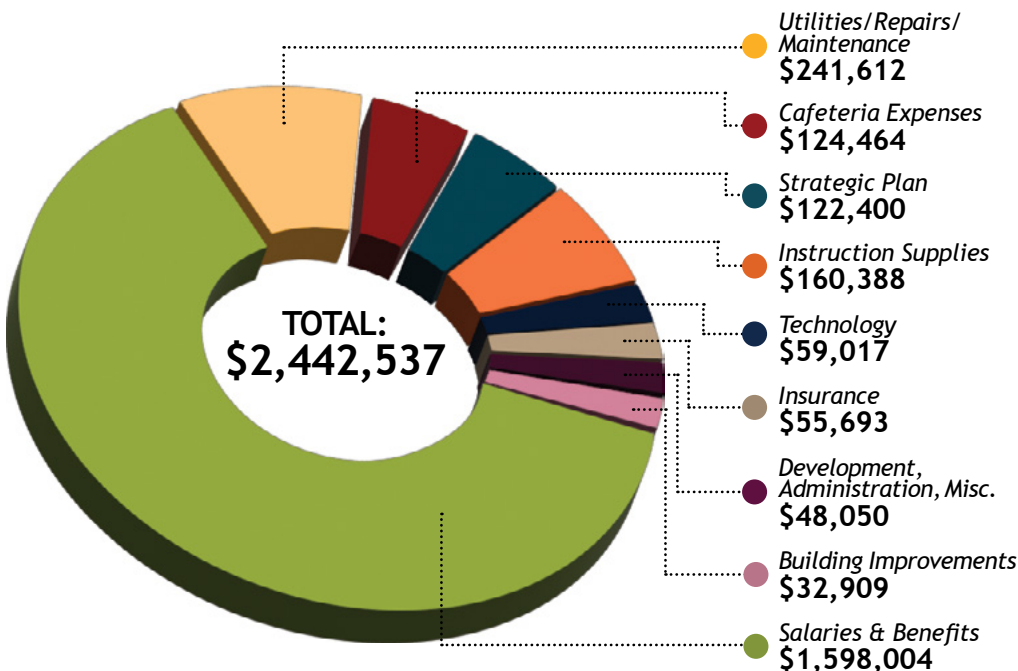


School Fundraising*	
Donum Fidei Auction	\$200,400
Fund the Future	\$122,400
Big Bazoochley	\$116,700
League of Angels & Other Gifts	\$102,700



#### SCHOOL EXPENSES

School expenses totaled **\$2.4M** for FY23-24. The majority of which consists of salaries and benefits, utilities, repairs, maintenance, instruction supplies and cafeteria expenses. Included in this year's instruction supplies expense is new 6-year ELA curriculum for grades Pre-K-5th, which cost **\$48,750**.



At the end of the last school year, we had **318 students** in grades K-8 and **29 preschoolers**.

Enrollment continues to be strong, and we remain thankful for the generosity of the parish in supporting the next generation of Catholics.

### INCOME

<b>CHURCH RECEIPTS</b>	<b>Actual</b>	<b>Budget</b>
Stewardship	2,549,548	2,394,195
Other Income	362,484	185,397
Debt Reduction	126,608	103,875
<b>SUBTOTAL CHURCH INCOME</b>	<b>3,038,640</b>	<b>2,683,467</b>
<b>SCHOOL RECEIPTS</b>	<b>Actual</b>	<b>Budget</b>
School tuition & fees	778,408	639,500
Fundraisers	439,478	472,400
Endowment & interest	34,835	96,000
Parish subsidy	930,000	930,000
Other sources	263,609	200,840
<b>SUBTOTAL SCHOOL RECEIPTS</b>	<b>2,446,330</b>	<b>2,338,740</b>
<b>TOTAL PARISH INCOME</b>	<b>5,484,970</b>	<b>5,022,207</b>

### EXPENSE

<b>PARISH DISBURSEMENTS</b>	<b>Actual</b>	<b>Budget</b>
Parish programming	181,372	193,600
Capital expenditures	256,120	192,500
Loan Principal & Interest	260,389	243,415
Parish Personnel & Ops	936,163	944,380
School Subsidy & Local Scholarships	935,500	933,000
Archdiocese Assessments	166,627	176,572
<b>SUBTOTAL CHURCH DISBURSEMENTS</b>	<b>2,736,171</b>	<b>2,683,467</b>
<b>SCHOOL DISBURSEMENTS</b>	<b>Actual</b>	<b>Budget</b>
Salaries & benefits	1,598,004	1,657,743
Utilities/repairs/maintenance	241,612	257,804
Cafeteria expenses	124,464	100,160
Strategic plan	122,400	122,400
Instruction supplies	160,388	78,000
Technology	59,017	25,680
Insurance	55,693	54,097
Development/admin/misc.	48,050	42,856
Building improvements	32,909	- - -
<b>SUBTOTAL SCHOOL DISBURSEMENTS</b>	<b>2,442,537</b>	<b>2,338,740</b>
<b>NET OPERATING SURPLUS</b>	<b>306,262</b>	<b>- - -</b>
Additional disbursements & reserve funding		
Accrued expense for stained glass	44,000	
Waived endowment distribution	73,000	
Net transfer to cap ex reserve	110,000	
<b>NET EXCESS APPLIED TO FUTURE BUILDING FUND</b>	<b>79,262</b>	

### RESPONSIBILITY TO THE ARCHDIOCESE

**Cathedraticum:** Annual tax as provided under Canon Law Section 1263 for the bishop to fund the administrative costs of the diocese: **\$104,755**

**Assessments and Collections:** Includes amounts assessed to parishes or regions for Savior Pastoral Center and Youth Formation, as well as the Catholic Charities Christmas Collection and Priesthood Present and Future Collection:

- Youth Formation Assessment: **\$25,141**
- Christmas Collection (*additional amount above what was collected from parishioner donations*): **\$5,055**
- Pastoral Center Assessment: **\$9,617**
- Priesthood Assessment: **\$22,059**
- The Leaven: **\$30,600**

### RESPONSIBILITY TO OUR COMMUNITY

We provided direct support to Douglas County residents with rent and utility assistance, gas and grocery gift cards totaling **\$26,205** for the year.

#### **Holy Day Special Collections:**

- **Collections for Insight Pregnancy Center:** (*Assumption & Immaculate Conception Holy Day collections*) **\$4,903**
- **Collections for DARE:** (*Solemnity of Mary Holy Day collection*) **\$673**
- **Collection for Catholic Charities of Lawrence:** (*All Saints Day*) **\$2,566**

### RESPONSIBILITY OUTSIDE OF THE ARCHDIOCESE

Holy Father - Peter's Pence	<b>\$2,205</b>
Central & Eastern Europe	<b>\$3,790</b>
Mauí Fire Relief	<b>\$8,815</b>
Holy Land ( <i>Good Friday</i> )	<b>\$2,715</b>
Campaign for Human Development	<b>\$ 352</b>
Catholic Charities Christmas	<b>\$5,760</b>
Catholic Home Missions Appeal	<b>\$ 416</b>
CRS Rice Bowls	<b>\$1,780</b>
World Mission Sunday	<b>\$1,083</b>
Retirement for Religious	<b>\$1,667</b>
Mission Co-op	<b>\$11,160</b>

Intentional catechesis is the goal of our faith formation for all children at Corpus Christi. We strive to introduce children to Jesus and foster a friendship with Him as well as a love for our Catholic faith, so that when they hear His voice in calling them, they can respond confidently and wholly to His love.

From an academic standpoint, CCCS students continue to exceed state AND other archdiocesan schools in nearly every grade level in reading, math, and science.

- 60** Total Religious Education Students
- 80** Total students in Confirmation Prep
- 20** Average number of high schoolers attending our weekly meetings
- 100** Average number of parents & children at our Domestic Church gatherings
- 83** Number of parents attending our Parent Formation meetings
- 327** Total number of students enrolled at CCCS

**670** Students and parents who are part of our community where we aim to form disciples and foster their faith connection.

## FAITH FORMATION HIGHLIGHTS FOR 2024

- Launched new Confirmation, Religious Education, Family Formation, & High School Youth Ministry programs
- Quarterly Domestic Church meetings for young families
- Quarterly Parent Formation Nights
- Weekly Summer Scripture Study for 7-12 graders
- **10** Catechists leading Religious Education classes
- **60** Students enrolled in Religious Education
- **27** Confirmed in Fall 2024
- **78** 7th & 8th graders enrolled in Confirmation Prep
- **16** Core team leading Confirmation Prep
- **19** Teens attended Steubenville Conference
- **12** Teens participated in Prayer & Action
- **20** Average weekly high school Life Teen attendance
- **10** Core team leading high schoolers



# we ASSIST

Corpus Christi has a long history of generously supporting the Lawrence community in numerous ways. Through the Benevolent Fund (*Poor Box*), we gave over **\$26,000** to assist people paying for gas, rent, and utilities. This fall, we developed a partnership with Catholic Charities at their Family Resource Center here in Lawrence.

We continue to aid parishioners in need, but will refer community members to Catholic Charities. Additionally, the Corpus community continued to show generosity by providing time, talent, and treasure to numerous organizations such as Ballard Center, LINK, Insight Women's Center, and Just Food.



6001 Bob Billings Pkwy • Lawrence, KS 66049

## we **PROGRESS**

Corpus Christi will be celebrating our 44th Anniversary in Summer 2025. Since 1981, when we started with just over 300 families, our growth of the parish has been incredible! We now have 1480 families. As with any church that experiences such growth, our needs for data tracking, effective communication, and church operations have changed.

Parish leadership has had many discussions specifically with regard to technology and its

role in maintaining and improving parishioner engagement. They saw the need for a more robust solution. A platform that would allow leadership as well as parishioners, to import and update your demographic, personal, sacramental, giving and ministry information. Corpus Connect does all these things and also allows direct communication and real-time information to be accessed in one user-friendly platform.

With this new platform, we look forward to rolling out in the coming year the liturgical ministry schedules to take the place of Ministry Scheduler Pro, our current platform; as well as launch the Corpus Connect App for fast and easy access from your phone.

Leadership feels empowered that Corpus Connect will move our parish forward productively, and efficiently maintain better communication with parishioner information and your connection to our parish.

## PARISH COMMUNITY



**7.1** AVERAGE NUMBER OF MINISTRIES INVOLVEMENT PER HOUSEHOLD

- **1480** REGISTERED HOUSEHOLDS
- **96** NEW FAMILIES
- **60** MINISTRIES & COMMITTEES
- **5** NEW MINISTRIES